

**SISTEMA: ALBAÑILERIA /TABLEROS / EIFS**

**REMATES**

Código de producto **66187, 6625, 6638 6650, 6650B**

Descripción Remate en diferentes configuraciones de espesor y forma con flanco perforado en 1-3/4" de matriz combinada.

Aplicación: **EXTERIOR e INTERIOR**

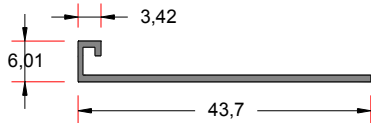
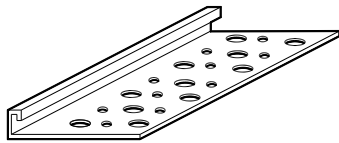
Pzas. x Caja 100 pzas, 60 pzas para 6650B

Largo x pza. 3.05 mts

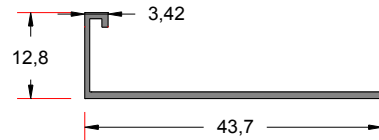
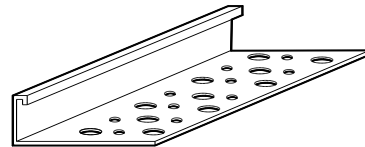
Peso aprox caja 20 kgs

Color: Blanco

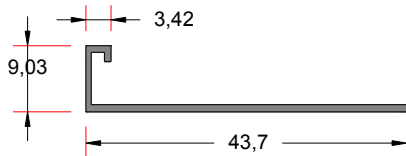
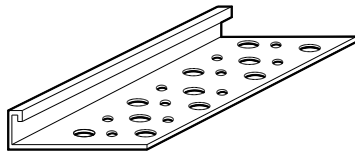
**6625**  
Remate  
de 1/4"



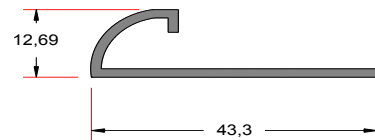
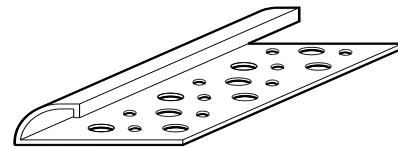
**6650**  
Remate  
de 1/2"



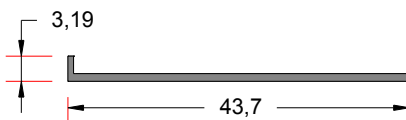
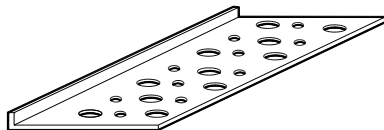
**6638**  
Remate  
de 3/8"



**6650B**  
Remate  
de 1/2"  
boleado



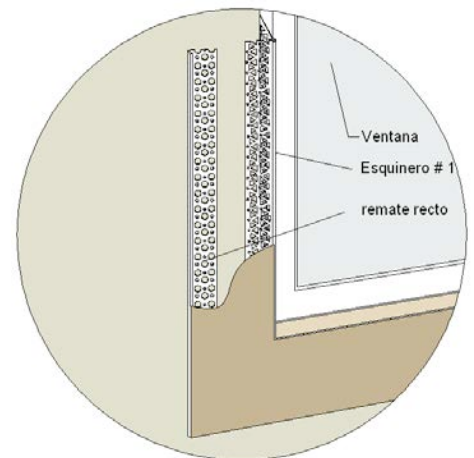
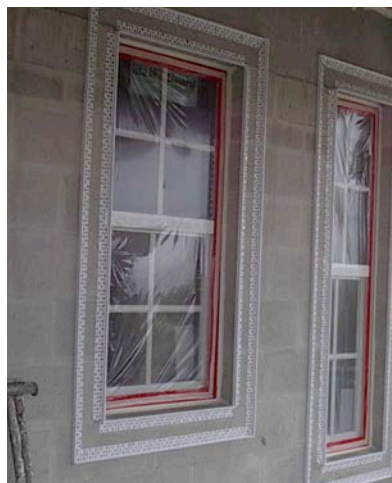
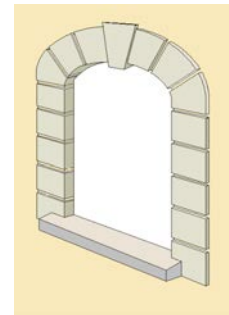
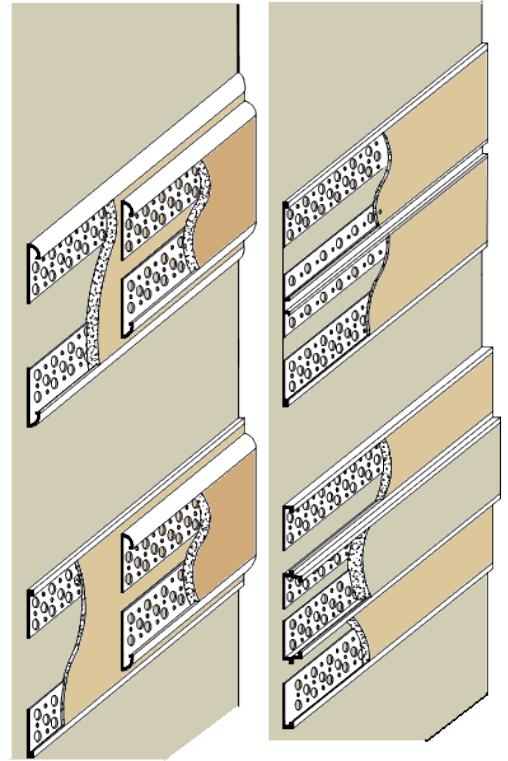
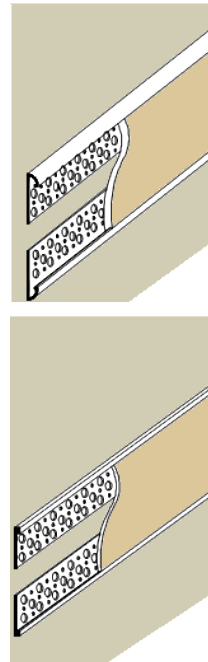
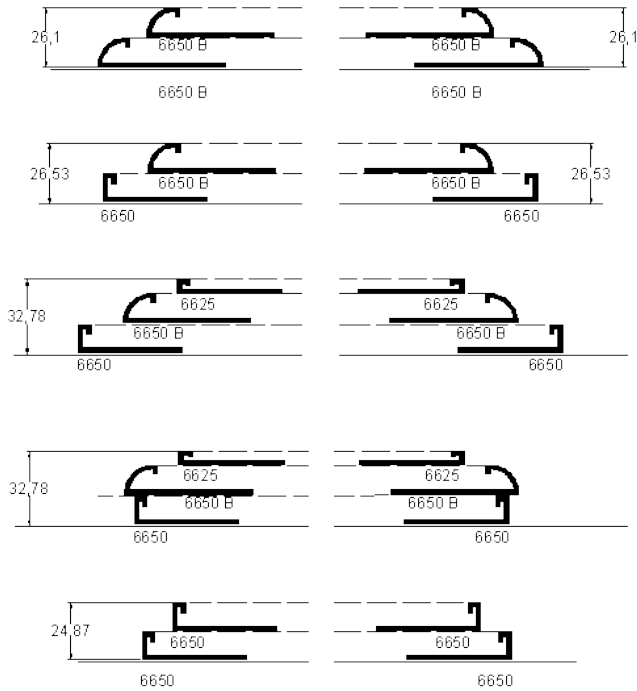
**66187**  
Remate  
de 1/8"



# FICHA TECNICA DE PRODUCTO

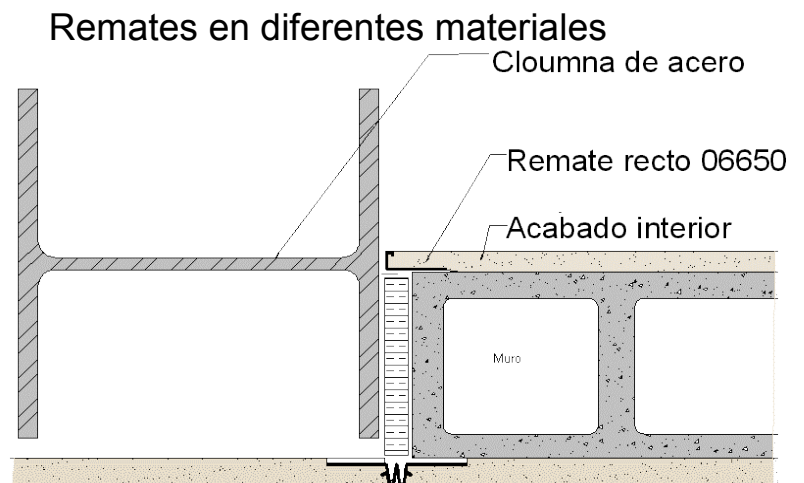
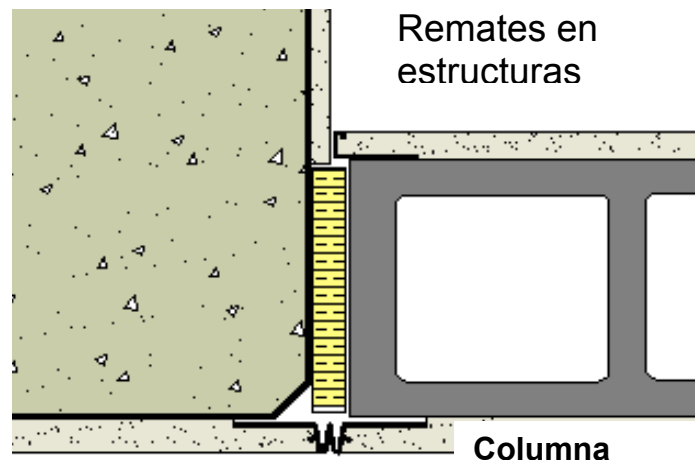
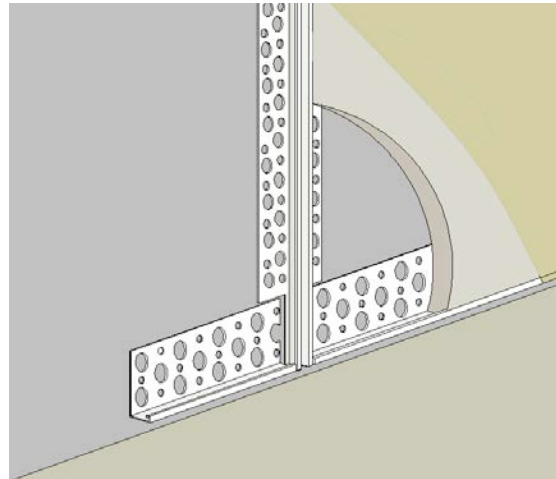


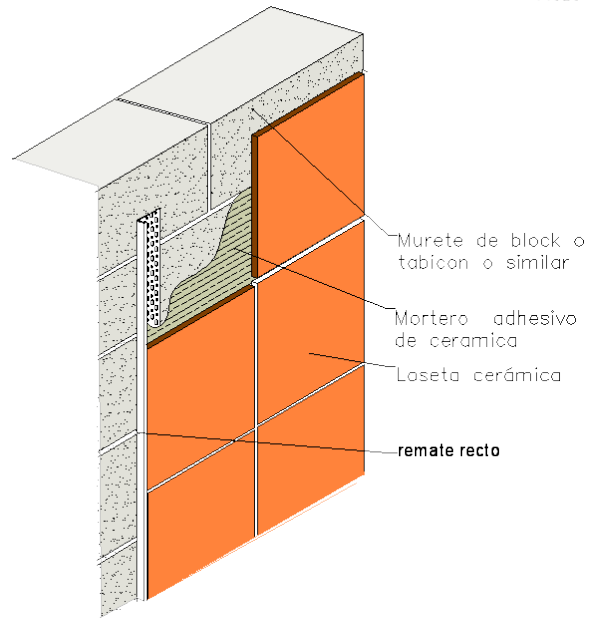
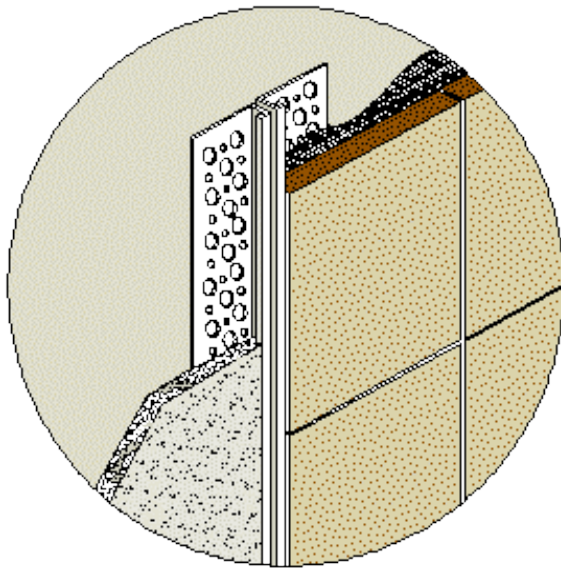
## En aplicaciones de molduras y relieves



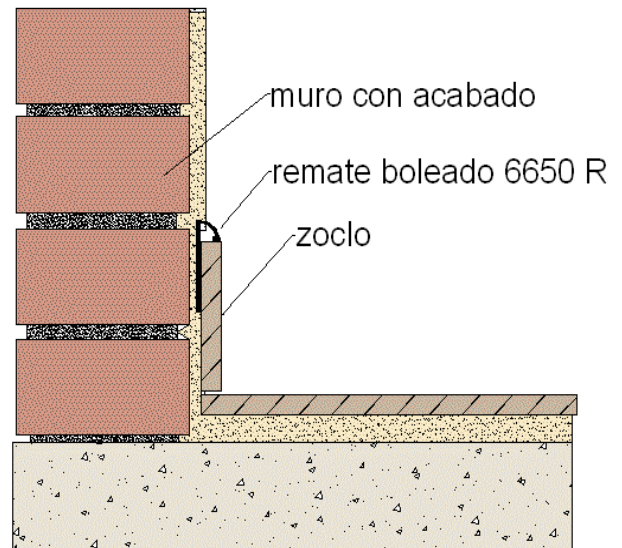
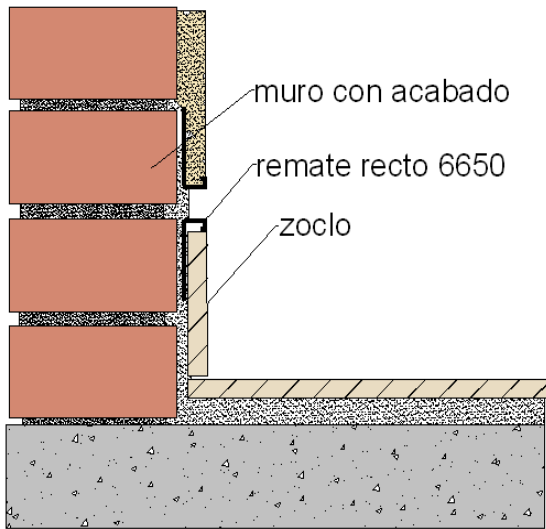
Tel (55) 5485 6030  
pmasp.vinyl@gmail.com

Remates de acabados en espesores determinados



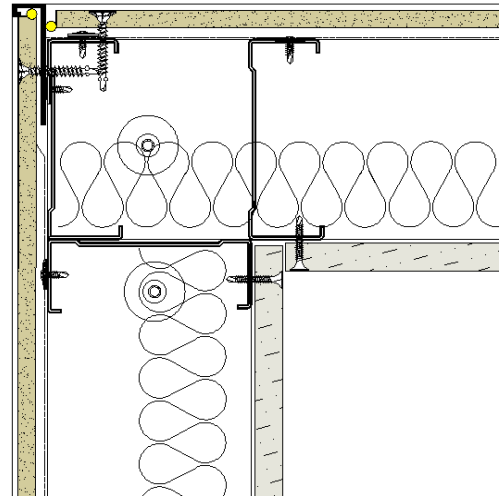
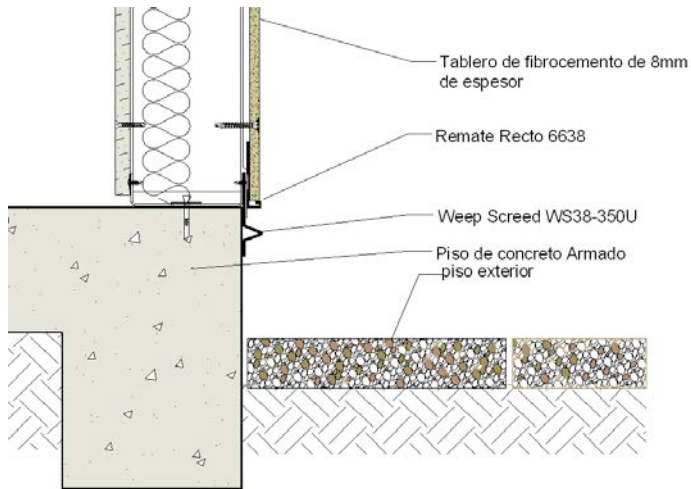


Como remates de zoclos y acabados



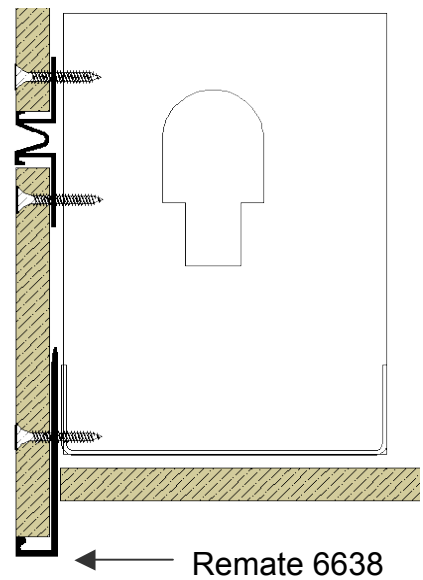
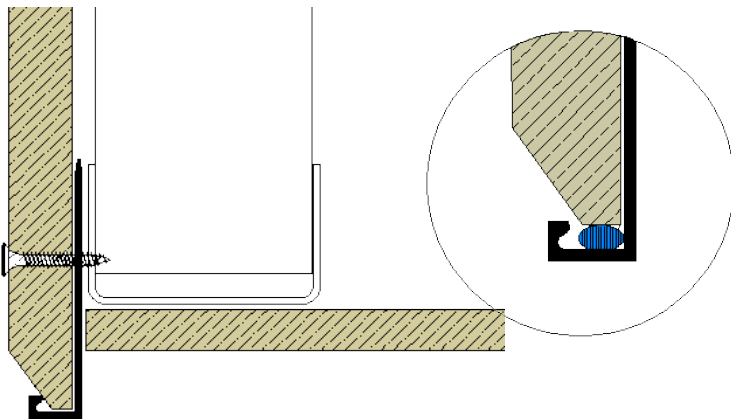


En sistemas de tableros de fibrocemento  
Como arrancador, esquinero y gotero



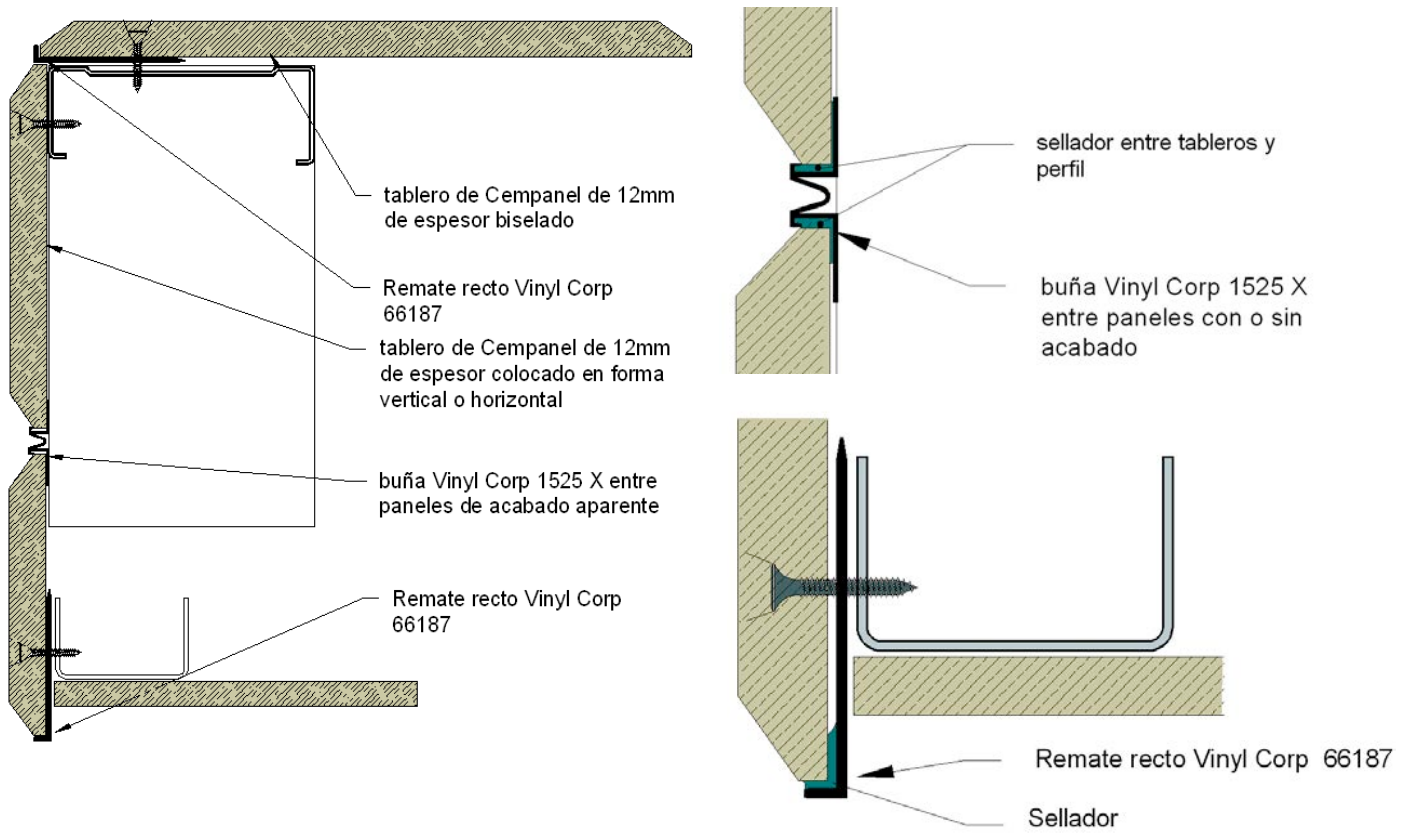
### Opción con remate 6638

Gotero o remate en tablero de fibrocemento biselado de 12mm



Gotero o remate en tablero de fibrocemento de 8mm de espesor

Opción con perfil de remate 66187



Opciones con remate 6625

